



CrashPlan Archiving for Microsoft 365

Stop Storage Bloat. Cut Costs. Reduce Risk.

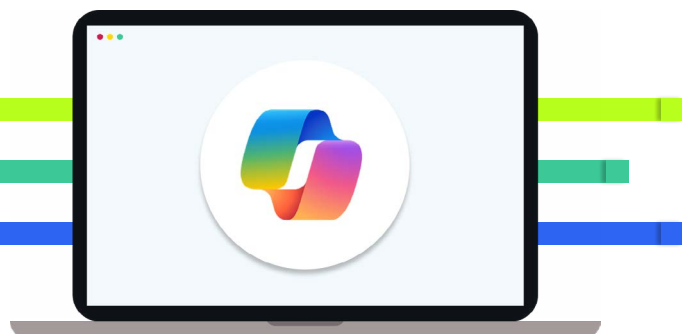


The Microsoft 365 Data Growth Challenge

As Microsoft 365 environments expand, unused and duplicate data quickly consumes space.

- ✓ **Microsoft 365 data volume grows by about 20% every year.**
- ✓ **Storage can account for up to 70% of total backup and recovery costs.**
- ✓ SharePoint and Exchange are filled with inactive or redundant files.
- ✓ Inconsistent retention policies increase compliance risk.

The result is uncontrolled growth, unpredictable costs, and exposure to data loss when retention limits are exceeded.



Manage the Full Data Lifecycle with CrashPlan

CrashPlan unifies backup, archiving and compliance. Built-in archiving and data control keep your Microsoft 365 footprint lean and predictable, containing costs without limiting access.

You can keep what you need for compliance, retire what you don't, and move everything to the right storage tier at the right cost.

CrashPlan Archiving helps you:



Identify and archive inactive or redundant data to eliminate storage bloat.



Lower storage costs through deduplication, compression, and immutable low-cost tiers.



Strengthen compliance with built-in retention, legal hold, and audit-ready controls.

Managing the full Microsoft 365 data lifecycle—from creation to deletion—helps you protect more while spending less.

Key Benefits

Take Control of Storage Costs, Without Limiting Access

CrashPlan's archiving helps you get costs under control, while keeping data at your users' fingertips.

- ✓ Automatically archive inactive SharePoint and Exchange data. Flexible archive policies can be set based on data activity, age, file size and amount of primary storage available.
- ✓ Deduplicate and compress data before storing it in a lower-cost, immutable tier.
- ✓ Choose the storage model that fits your budget, whether that's your own environment, CrashPlan's data centers, or Microsoft Azure.
- ✓ File stubbing ensures quick access to files, even after they have been archived.

Organizations that use CrashPlan lifecycle archiving have reduced their Microsoft 365 storage costs by **up to 65%**.

Simplify Compliance and Governance

Compliance shouldn't be an afterthought. Retention, legal hold, and deletion rules belong directly within your backup workflows.

CrashPlan combines backup and archiving into a single solution and workflow. So you manage fewer software tools, workflows, and copies of your data, reducing exposure and compliance failures across your organization.

- Immutable storage for audit-ready data retention
- Built-in **legal hold** and **eDiscovery** reduce tool sprawl and minimize exposure.
- Meet regulatory standards including **GDPR, HIPAA, and SEC**.

CrashPlan automates compliance so your team spends less time managing policies and more time supporting the business.

Why IT Leaders Choose CrashPlan

- ✓ Unified backup and archiving that reduces complexity and eliminates duplicate data.
- ✓ Auditable governance and easy eDiscovery.
- ✓ Immutable storage that safeguards against deletion and ransomware.
- ✓ Predictable cost savings that free up IT budgets for strategic projects.
- ✓ Customizable retention policies to meet global compliance requirements.

CrashPlan makes Microsoft 365 archiving simple, secure, and sustainable. It turns data growth into a managed, cost-effective process.

CrashPlan provides cyber-ready data resilience and governance in a single platform for organizations whose ideas power their revenue. Trusted by entrepreneurs, professionals, and businesses of all sizes worldwide, CrashPlan's comprehensive backup and recovery solutions ensure the safety and compliance of data without disruption, anywhere at any time.

Contact us to learn more at crashplan.com/contact-sales

